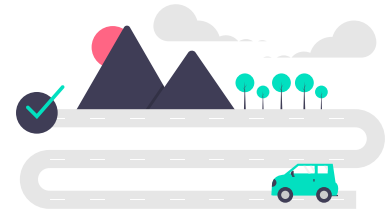




## Pathfinders: Career Discovery Program

Pathfinders is a **3-session**, one-on-one mentorship program that lets middle school and high school students take **3 careers or academic subjects** on a test-drive.

Pathfinders is designed to give students exposure to a diversity of college majors through connecting them with experts who are devoting their careers to those disciplines. Our students walk away from the program with a clearer sense of their career and academic interests, ideas and next steps for further exploration, a 400-word reflection paper on their learnings, as well as a written diagnostic on their passion discovery journey so far from a trained professional.



## What students get out of this program

- 1. Exposure to experts in 3 chosen disciplines**
- 2. Student-generated ideas** for further exploration in each of the 3 disciplines
- 3. Access to top experts** who are also trained educators
- 4. 1 Guided reflection session with trained educator** to identify strengths and interests of the student
- 5. 1 written “Passion Diagnostic Report”** assembled by Polygence educator that assesses the strengths, interests, and areas of growth for the student



**Apply now here**

**Tuition: \$595 / 3 sessions + 1 Passion Diagnostic session**

- 3 sessions with 3 different career experts
- 1 Passion Diagnostic reflection session with a Polygence educator

Questions? Reach out to [pathfinders@polygence.org](mailto:pathfinders@polygence.org)

# Sample Program Composition 1

## Biology Pathfinders Careers in Biology



<p><b>Session 1</b> Neuroscience</p>	<p><b>Session 2</b> Microbiology</p>	<p><b>Session 3</b> Cancer Biology</p>	<p><b>Session 4</b> Passion Diagnostic Session</p>
<div data-bbox="138 856 409 1129" data-label="Image"> </div> <div data-bbox="164 1150 381 1255" data-label="Caption"> <p><b>Rahul Patel</b> PhD Candidate at UNC Chapel Hill</p> </div>	<div data-bbox="495 856 766 1129" data-label="Image"> </div> <div data-bbox="488 1150 771 1255" data-label="Caption"> <p><b>Emily Smith</b> PhD Candidate at UCLA in microbiology</p> </div>	<div data-bbox="852 856 1123 1129" data-label="Image"> </div> <div data-bbox="820 1150 1154 1255" data-label="Caption"> <p><b>Ali Massa</b> PhD Candidate at Dartmouth in cancer biology</p> </div>	<div data-bbox="1209 856 1481 1129" data-label="Image"> </div> <div data-bbox="1258 1150 1437 1213" data-label="Caption"> <p>With Polygence Educator</p> </div>
<ul style="list-style-type: none"> <li>• A day in the life of a neuroscientist</li> <li>• How did Rahul realize he wanted to become a neuroscientist?</li> <li>• What research is Rahul doing? What questions is he thinking about?</li> <li>• What resources should you look at to dive deeper?</li> </ul>	<ul style="list-style-type: none"> <li>• A day in the life of a microbiologist</li> <li>• How did Emily realize she wanted to become a microbiologist?</li> <li>• What research is Emily doing? What questions is she thinking about?</li> <li>• What resources should you look at to dive deeper?</li> </ul>	<ul style="list-style-type: none"> <li>• A day in the life of a cancer biologist</li> <li>• How did Ali realize she wanted to become a cancer biologist?</li> <li>• What research is Ali doing now? What questions is she thinking about?</li> <li>• What resources should you look at to dive deeper?</li> </ul>	<p><b>400-word reflection paper</b> on ideas for future research projects and further exploration</p> <hr/> <p><b>Students will also receive a written Passion Diagnostic Report after the session that:</b></p> <ul style="list-style-type: none"> <li>• Assesses their strengths and their interests</li> <li>• Identifies potential career paths and next steps</li> <li>• Recommends programs and other ways for the student to continue their path of discovery</li> </ul>

# Sample Program Composition 2

Pathfinders

3 Different Careers



<p><b>Session 1</b> History</p>	<p><b>Session 2</b> Environmental Science</p>	<p><b>Session 3</b> Cancer Biology</p>	<p><b>Session 4</b> Passion Diagnostic Session</p>
<div data-bbox="138 835 407 1108" data-label="Image"> </div> <p><b>Nora Lessersohn</b> PhD Candidate at University College London in Middle Eastern History</p>	<div data-bbox="495 835 764 1108" data-label="Image"> </div> <p><b>Matt Bejtlich</b> Researcher at Brown/ RISD in Sustainability and Environmental Science</p>	<div data-bbox="847 835 1117 1108" data-label="Image"> </div> <p><b>Ali Massa</b> PhD Candidate at Dartmouth in cancer biology</p>	<div data-bbox="1203 835 1482 1108" data-label="Image"> </div> <p>With Polygence Educator</p>
<ul style="list-style-type: none"> <li>• A day in the life of a historian</li> <li>• How did Nora realize she wanted to become a historian?</li> <li>• What research is she doing? What questions is she thinking about?</li> <li>• What resources should you look at to dive deeper?</li> </ul>	<ul style="list-style-type: none"> <li>• A day in the life of an environmental scientist</li> <li>• How did Matt realize he wanted to become an environmental scientist?</li> <li>• What research is he doing? What questions is he thinking about?</li> <li>• What resources should you look at to dive deeper?</li> </ul>	<ul style="list-style-type: none"> <li>• A day in the life of a cancer biologist</li> <li>• How did Ali realize she wanted to become a cancer biologist?</li> <li>• What research is Ali doing now? What questions is she thinking about?</li> <li>• What resources should you look at to dive deeper?</li> </ul>	<p><b>400-word reflection paper</b> on ideas for future research projects and further exploration</p> <hr/> <p><b>Students will also receive a written Passion Diagnostic Report after the session that:</b></p> <ul style="list-style-type: none"> <li>• Assesses their strengths and their interests</li> <li>• Identifies potential career paths and next steps</li> <li>• Recommends programs and other ways for the student to continue their path of discovery</li> </ul>